

151 MAIDEN LANE BLOCK 72 LOT 7

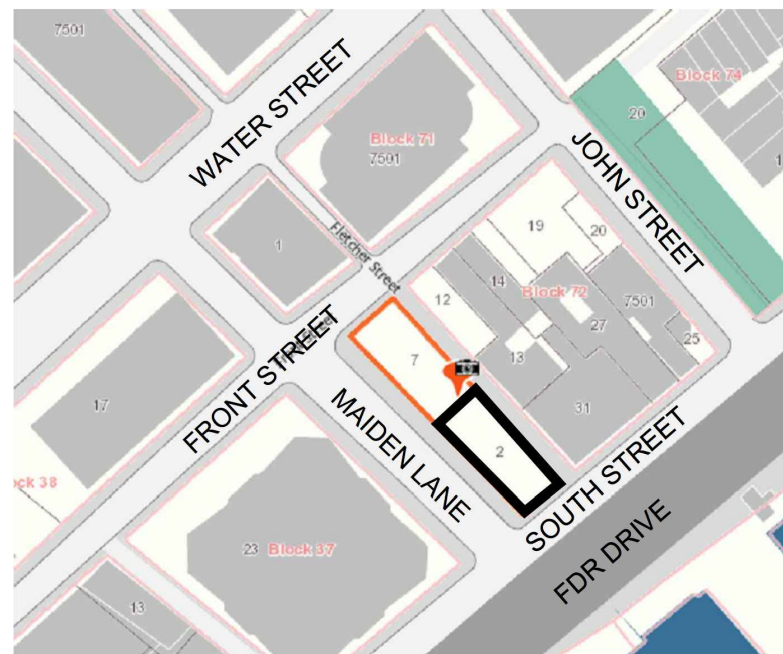
151 MAIDEN LANE BLOCK 72 LOT 7

MAIDEN LANE

FLETCHER STREET  
COBBLESTONE

1 SUPPORT OF EXCAVATION PLAN

Scale: 3/16" = 1'-0"



SOURCE: OASISNYC.NET  
NOT TO SCALE

BLOCK 72  
LOT 2

NOTE:

1. REFER TO DRAWING NUMBER SOE-001 FOR NOTES AND LIST OF DRAWINGS.

LEGEND:

- LB-X APPROXIMATE BORING LOCATION BY LANGAN
- LB-X(OW) APPROXIMATE BORING LOCATION BY LANGAN WITH OBSERVATION WELL
- B-X APPROXIMATE BORING LOCATION BY RA CONSULTANTS LLC
- +X.X APPROXIMATE GROUND WATER TABLE ELEVATION
- PROPOSED ROCK ANCHORS, REFER TO STRUCTURAL DRAWINGS FOR DETAILS.

(C) RA CONSULTANTS, LLC. CURRENT AND PRIOR YEARS.  
UNAUTHORIZED ALTERATION OR ADDITION TO THESE DRAWINGS IS A VIOLATION OF SECTION 7209 OF THE NEW YORK STATE EDUCATION LAW. COPIES OF THESE DRAWINGS NOT BEARING THE LICENCED ENGINEER'S INKED SEAL OR EMBOSSED SEAL SHALL NOT BE CONSIDERED TO BE A VALID TRUE COPY.

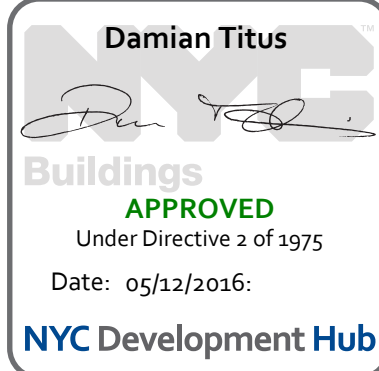
REV.	DATE	DETAILS
3	5/5/2016	POST APPROVAL AMENDMENT
2	3/14/2016	POST APPROVAL AMENDMENT
1	5/11/2015	POST APPROVAL AMENDMENT
	12/19/2014	UPDATED STRUCTURAL DRAWINGS
	9/2/2014	ISSUED FOR FILING
	8/21/2014	UPDATED SOE SYSTEM

PROJECT  
161 MAIDEN LANE  
NEW YORK, NY

TITLE  
SUPPORT OF EXCAVATION PLAN

RA CONSULTANTS LLC  
Geotechnical Engineering  
512 SEVENTH AVENUE  
NEW YORK, NY 10018  
(T) 646.484.3250 (F) 646.484.3251 WWW.RACLCC.COM

SEAL AND SIGNATURE	DATE: MAY 5 2014
PROJ. NO.: 13C1126	DRAWN BY: JH
CHECKED BY: NMA	DRAWING: SOE-100.03
SHEET: 2 OF 5	



Damian Titus

Buildings

APPROVED

Under Directive 2 of 1975

Date: 05/12/2016

NYC Development Hub

151 MAIDEN LANE  
BLOCK: 72 LOT: 7  
3 STORY BUILDING WITH  
CELLAR

CONTINUOUS W14x90  
WALER (TYP.) -  
EL. +1.25

SIDEWALK

TC 5.85  
BC 5.29

MAIDEN LANE

STEEL FACED CURB

TC 5.62  
BC 5.22

TC 5.4  
BC 5.04

TC 5.37  
BC 4.78

TC 5.06  
BC 4.58

TC 4.5  
BC 3.89

TC 4.59  
BC 4.07

TC 4.56  
BC 3.83

TC 4.43  
BC 4.25

TC 3

13'-0"  
13'-9"  
2'-10"

89°

93°

2'-11"

TC 5.85  
BC 5.29

MAIDEN LANE

STEEL FACED CURB

TC 5.62  
BC 5.22

TC 5.4  
BC 5.04

TC 5.37  
BC 4.78

TC 5.06  
BC 4.58

TC 4.5  
BC 3.89

TC 4.59  
BC 4.07

TC 4.56  
BC 3.83

TC 4.43  
BC 4.25

TC 3

13'-0"  
13'-9"  
2'-10"

89°

93°

2'-11"

TC 5.85  
BC 5.29

MAIDEN LANE

STEEL FACED CURB

TC 5.62  
BC 5.22

TC 5.4  
BC 5.04

TC 5.37  
BC 4.78

TC 5.06  
BC 4.58

TC 4.5  
BC 3.89

TC 4.59  
BC 4.07

TC 4.56  
BC 3.83

TC 4.43  
BC 4.25

TC 3

13'-0"  
13'-9"  
2'-10"

89°

93°

2'-11"

TC 5.85  
BC 5.29

MAIDEN LANE

STEEL FACED CURB

TC 5.62  
BC 5.22

TC 5.4  
BC 5.04

TC 5.37  
BC 4.78

TC 5.06  
BC 4.58

TC 4.5  
BC 3.89

TC 4.59  
BC 4.07

TC 4.56  
BC 3.83

TC 4.43  
BC 4.25

TC 3

13'-0"  
13'-9"  
2'-10"

89°

93°

2'-11"

TC 5.85  
BC 5.29

MAIDEN LANE

STEEL FACED CURB

TC 5.62  
BC 5.22

TC 5.4  
BC 5.04

TC 5.37  
BC 4.78

TC 5.06  
BC 4.58

TC 4.5  
BC 3.89

TC 4.59  
BC 4.07

TC 4.56  
BC 3.83

TC 4.43  
BC 4.25

TC 3

13'-0"  
13'-9"  
2'-10"

89°

93°

2'-11"

TC 5.85  
BC 5.29

MAIDEN LANE

STEEL FACED CURB

TC 5.62  
BC 5.22

TC 5.4  
BC 5.04

TC 5.37  
BC 4.78

TC 5.06  
BC 4.58

TC 4.5  
BC 3.89

TC 4.59  
BC 4.07

TC 4.56  
BC 3.83

TC 4.43  
BC 4.25

TC 3

13'-0"  
13'-9"  
2'-10"

89°

93°

2'-11"

TC 5.85  
BC 5.29

MAIDEN LANE

STEEL FACED CURB

TC 5.62  
BC 5.22

TC 5.4  
BC 5.04

TC 5.37  
BC 4.78

TC 5.06  
BC 4.58

TC 4.5  
BC 3.89

TC 4.59  
BC 4.07

TC 4.56  
BC 3.83

TC 4.43  
BC 4.25

TC 3

13'-0"  
13'-9"  
2'-10"

89°

93°

2'-11"

TC 5.85  
BC 5.29

MAIDEN LANE

STEEL FACED CURB

TC 5.62  
BC 5.22

TC 5.4  
BC 5.04

TC 5.37  
BC 4.78

TC 5.06  
BC 4.58

TC 4.5  
BC 3.89

TC 4.59  
BC 4.07

TC 4.56  
BC 3.83

TC 4.43  
BC 4.25

TC 3

13'-0"  
13'-9"  
2'-10"

89°

93°

2'-11"

TC 5.85  
BC 5.29

MAIDEN LANE

STEEL FACED CURB

TC 5.62  
BC 5.22

TC 5.4  
BC 5.04

TC 5.37  
BC 4.78

TC 5.06  
BC 4.58

TC 4.5  
BC 3.89

TC 4.59  
BC 4.07

TC 4.56  
BC 3.83

TC 4.43  
BC 4.25

TC 3

13'-0"  
13'-9"  
2'-10"

89°

93°

2'-11"

TC 5.85  
BC 5.29

MAIDEN LANE

STEEL FACED CURB

TC 5.62  
BC 5.22

TC 5.4  
BC 5.04

TC 5.37  
BC 4.78

TC 5.06  
BC 4.58

TC 4.5  
BC 3.89

TC 4.59  
BC 4.07

TC 4.56  
BC 3.83

TC 4.43  
BC 4.25

TC 3

13'-0"  
13'-9"  
2'-10"

89°

93°

2'-11"

TC 5.85  
BC 5.29

MAIDEN LANE

STEEL FACED CURB

TC 5.62  
BC 5.22

TC 5.4  
BC 5.04

TC 5.37  
BC 4.78

TC 5.06  
BC 4.58

TC 4.5  
BC 3.89

TC 4.59  
BC 4.07

TC 4.56  
BC 3.83

TC 4.43  
BC 4.25

TC 3

13'-0"  
13'-9"  
2'-10"

89°

93°

2'-11"

TC 5.85  
BC 5.29

MAIDEN LANE

STEEL FACED CURB

TC 5.62  
BC 5.22

TC 5.4  
BC 5.04

TC 5.37  
BC 4.78

TC 5.06  
BC 4.58

TC 4.5  
BC 3.89

TC 4.59  
BC 4.07

TC 4.56  
BC 3.83

TC 4.43  
BC 4.25

TC 3

13'-0"  
13'-9"  
2'-10"

89°

93°

2'-11"

TC 5.85  
BC 5.29

MAIDEN LANE

STEEL FACED CURB

TC 5.62  
BC 5.22

TC 5.4  
BC 5.04

TC 5.37  
BC 4.78

TC 5.06  
BC 4.58

TC 4.5  
BC 3.89

TC 4.59  
BC 4.07

TC 4.56  
BC 3.83

TC 4.43  
BC 4.25

TC 3

13'-0"  
13'-9"  
2'-10"

89°

93°

2'-11"

TC 5.85  
BC 5.29

MAIDEN LANE

STEEL FACED CURB

TC 5.62  
BC 5.22

TC 5.4  
BC 5.04

TC 5.37  
BC 4.78

TC 5.06  
BC 4.58

TC 4.5  
BC 3.89

TC 4.59  
BC 4.07

TC 4.56  
BC 3.83

TC 4.43  
BC 4.25

TC 3

13'-0"  
13'-9"  
2'-10"

89°

93°

2'-11"

TC 5.85  
BC 5.29

MAIDEN LANE

STEEL FACED CURB

TC 5.62  
BC 5.22

TC 5.4  
BC 5.04

TC 5.37  
BC 4.78

TC 5.06  
BC 4.58

TC 4.5  
BC 3.89

TC 4.59  
BC 4.07

TC 4.56  
BC 3.83

TC 4.43  
BC 4.25

TC 3

13'-0"  
13'-9"  
2'-10"

89°

93°

2'-11"

TC 5.85  
BC 5.29

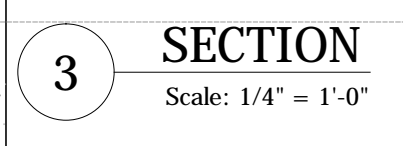
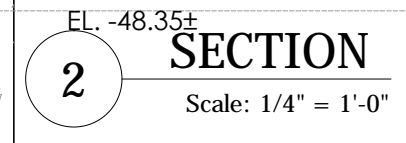
MAIDEN LANE

STEEL FACED CURB

TC 5.62  
BC 5.22

TC 5.4  
BC 5.04






- (C) RA CONSULTANTS LLC CURRENT AND PRIOR YEARS
- UNAUTHORIZED ALTERATION OR ADDITION TO THESE DRAWINGS IS A VIOLATION OF SECTION 7209 OF THE NEW YORK STATE EDUCATION LAW. COPIES OF THESE DRAWINGS NOT BEARING THE LICENCED ENGINEER'S INKED SEAL OR EMBOSSED SEAL SHALL NOT BE CONSIDERED TO BE A VALID TRUE COPY.


PROJECT

161 MAIDEN LANE  
NEW YORK, NY

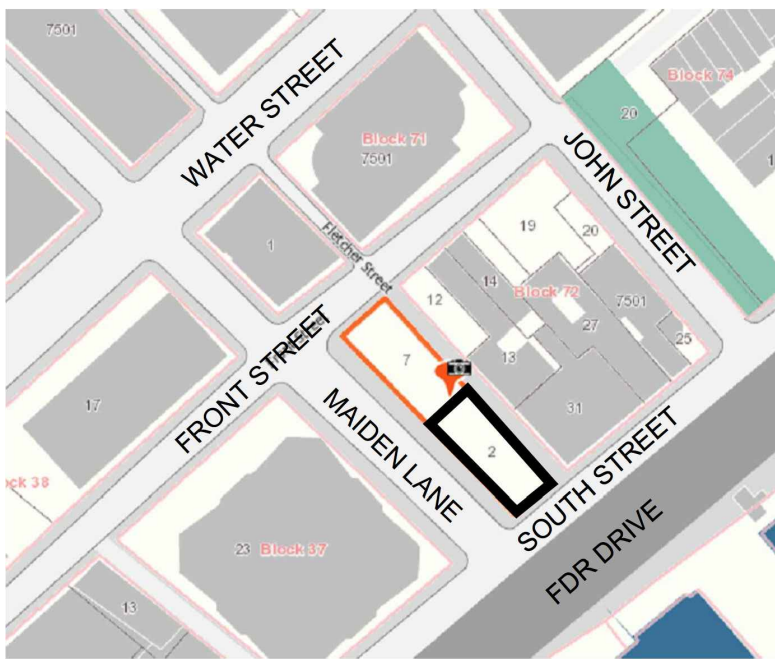
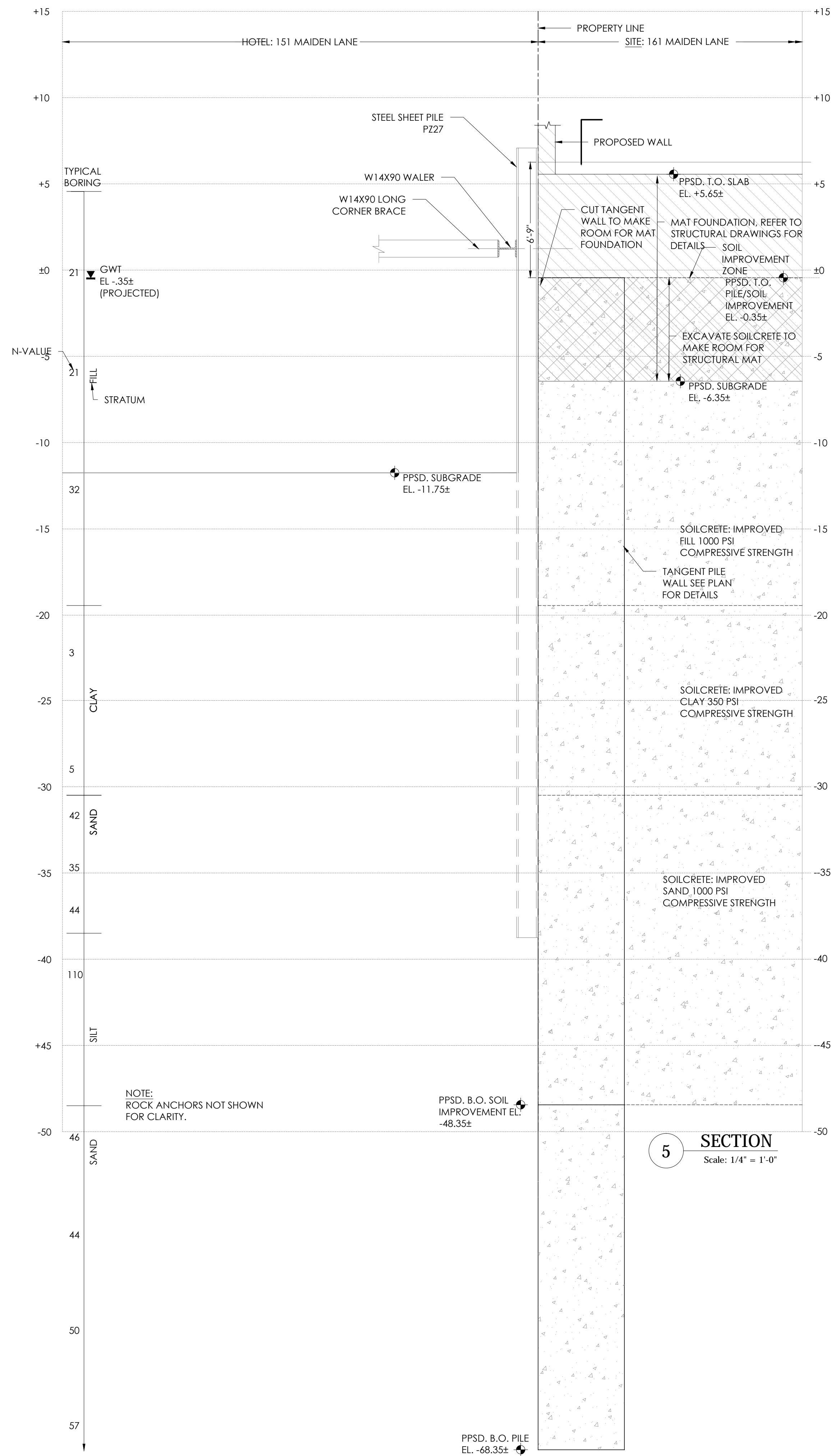
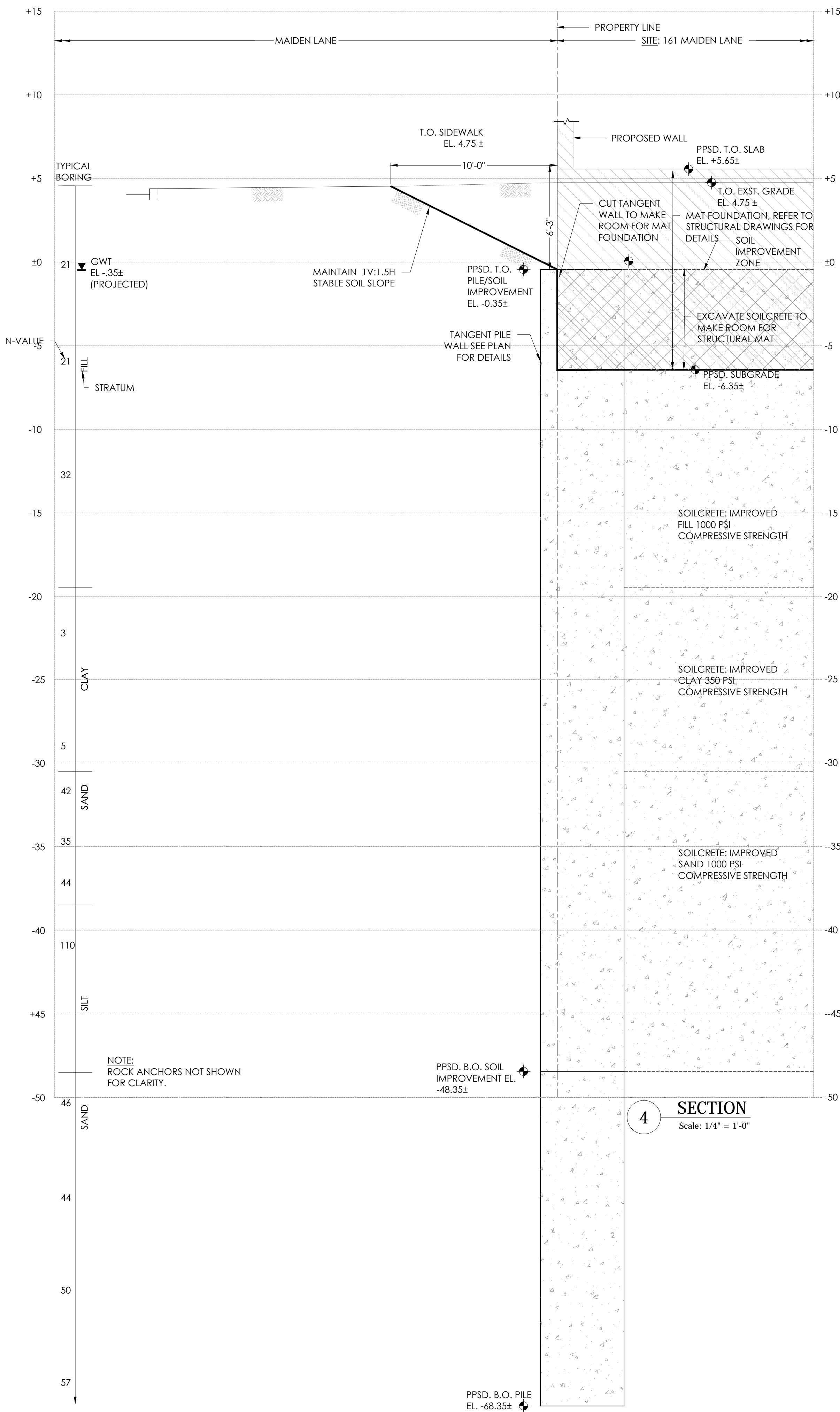
 **RA CONSULTANTS LLC**  
*Geotechnical Engineering*

512 SEVENTH AVENUE NEW YORK, NY 10018  
[T] 646.484.3250 [F] 646.484.3251 [WWW.RAQLC.COM](http://WWW.RAQLC.COM)

SEAL AND SIGNATURE	DATE: MAY 5 2014
	PROJ. NO.: 13C1126 DRAWN BY: JH CHECKED BY: NMA DRAWING: <div style="font-size: 2em; font-weight: bold;">SOE-200.03</div>
	SHEET: 3 OF 5

**Damian Titus**  
  
**Buildings**  
**APPROVED**  
Under Directive 2 of 1975  
Date: 05/12/2016:  
**NYC Development Hub**





SOURCE: OASISNYC.NET  
NOT TO SCALE

- NOTES:
- REFER TO DRAWING NUMBER SOE-001 FOR NOTES AND LIST OF DRAWINGS.
  - REFER TO DRAWING NUMBER SOE-100 FOR PLAN, LEGEND AND INSTALLATION PROCEDURE.

(C) RA CONSULTANTS, LLC. CURRENT AND PRIOR YEARS.  
UNAUTHORIZED ALTERATION OR ADDITION TO THESE DRAWINGS IS A VIOLATION OF SECTION 7209 OF THE NEW YORK STATE EDUCATION LAW. COPIES OF THESE DRAWINGS NOT BEARING THE LICENCED ENGINEER'S INKED SEAL OR EMBOSSED SEAL SHALL NOT BE CONSIDERED TO BE A VALID TRUE COPY.

REV.	DATE	DETAILS
3	5/5/2016	POST APPROVAL AMENDMENT
2	3/14/2016	POST APPROVAL AMENDMENT
1	5/11/2015	POST APPROVAL AMENDMENT
	12/19/2014	UPDATED STRUCTURAL DRAWINGS
	9/2/2014	ISSUED FOR FILING
	8/21/2014	UPDATED SOE SYSTEM

PROJECT  
**161 MAIDEN LANE  
NEW YORK, NY**

TITLE  
**SUPPORT OF EXCAVATION  
SECTIONS**

**RA CONSULTANTS LLC**  
Geotechnical Engineering  
512 SEVENTH AVENUE NEW YORK, NY 10018  
(T) 646.484.3250 (F) 646.484.3251 WWW.RACLCC.COM

SEAL AND SIGNATURE	DATE: MAY 5 2014
PROJ. NO.: 13C1126	
DRAWN BY: JH	
CHECKED BY: NMA	
DRAWING:	
<b>SOE-201.02</b>	
SHEET:	4 OF 5

